

VOTE

CUYAHOGA COUNTY
BOARD OF ELECTIONS



Earn up
to **\$202.10!**

Why become a ESO?

- Give back to your community!
- Exercise your civic duty!
- Earn \$100 even if you are not needed all day!
- Earn double if you are sent to a polling location!

ELECTION SUBSTITUTE OFFICIAL (ESO)

- Are you a registered voter?
- Do you have a vehicle?
- Are you willing to work anywhere in Cuyahoga County?



NEED MORE INFORMATION?



electionofficials@cuyahogacounty.gov



216-443-3277

BECOME AN ELECTION SUBSTITUTE OFFICIAL



Now Hiring

ELECTION OFFICIALS

Voting Location Manager

Voting Location Managers (VLMs) oversee all activities within their polling location on Election Day. They assign and delegate duties to each PEO, serve as an on-site Election Equipment expert and are the point of contact with the Board of Elections. Hours begin at 5:30am and conclude when all Election Day supplies are returned to their assigned drop-off location.

\$200

Precinct Election Official

Precinct Election Officials' day begins at 5:30am when they report to their assigned polling location to set up for the open of polls at 6:30am. Throughout the day, they will assist voters with the election process, including check-in and directing voters in the scanning of their ballots. The day concludes after the polls are closed and supplies are packed up. All PEO's are required to attend a training class and work on Election Day.

\$172

Voting Location Deputy

Voting Location Deputies (VLDs) oversee all activities in their polling location and serve as the lead worker in assisting provisional voters. In the absence of the Voting Location Manager, the Deputy will assume their responsibilities in the polling location. Hours begin at 5:30am and conclude when all Election Day supplies are returned to their assigned drop-off location.

\$200



WWW.443VOTE.US



electionofficials@cuyahogacounty.gov



216-443-3277

Cuyahoga County Board of Elections Precinct Election Official FAQ

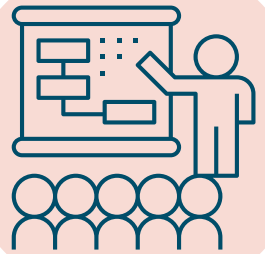


HOW DO I KNOW IF MY APPLICATION WAS ACCEPTED?

Once your application has been reviewed and accepted by the Cuyahoga County Board of Elections, you will be sent an email with instructions for how to proceed to training.

WHAT ARE THE TRAINING REQUIREMENTS?

Returning workers will receive information to complete online training courses at their own pace. First-time workers or those who haven't worked within the last year are required to attend in-person training sessions.



WHAT IS THE TIME COMMITMENT?

Monday before the election, report to your assigned polling location to set up at 6:00 p.m. On Election Day, report to your assigned polling location at 5:30 a.m. The polls close at 7:30 p.m., and all workers assist with closing procedures and tasks finishing approximately at 9:00 p.m.

WHERE WILL I WORK?

Workers are placed in Polling Locations as close to their home precinct as possible. Oftentimes, we do need workers in areas with low interest and are appreciative of workers who are willing to travel to locations outside of their neighborhood.



HOW WILL I BE COMPENSATED?

Precinct Election Officials receive a check with their stipend of at least \$172.10 sent out 3-5 weeks after the election.

Visit our website
www.443vote.us
or apply at:

