

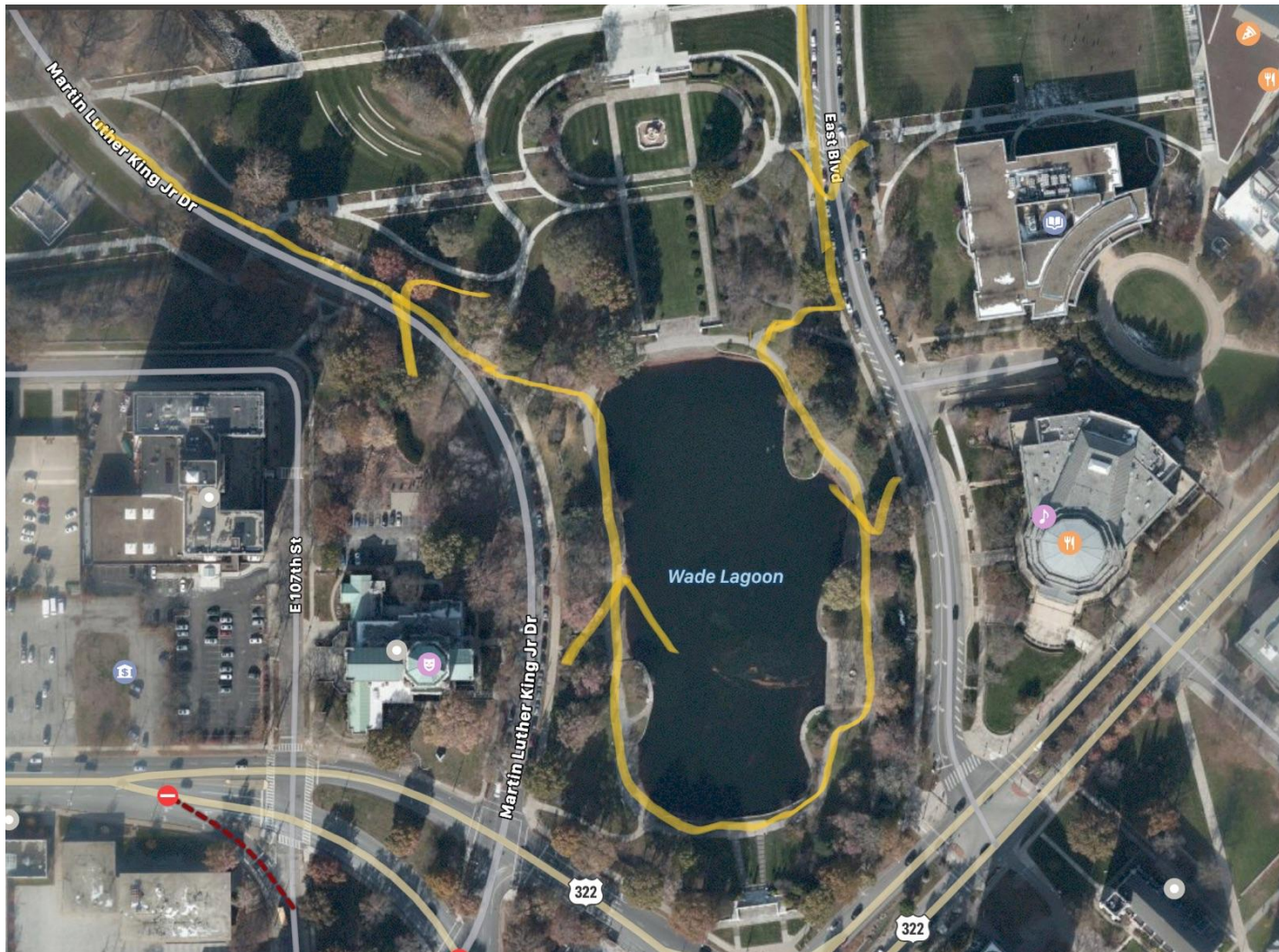
CWRU 5k Route

1. Runners will start on the track located on the west side of Disanto field and run under the scoreboard
2. Runners will turn left onto Finnigan way
3. Runners will turn right onto E115th street
4. Runners will turn right onto Wade Park Avenue
5. Runners will turn right onto E. 118th and run towards E. 117th
6. Runners will turn right onto E. 117th and continue straight
7. Runners continuing straight will run through the North Residential Village heading toward E. 116th:



8. Runners will turn right onto E. 116th and run towards E.115th
9. Runners will turn left on E. 115th where they reach the E. 115th/Juniper Rd/Bellflower Rd intersection
10. Runners cross the E. 115th/Juniper Rd/Bellflower Rd intersection onto Bellflower - [CWRU Officer at intersection](#)
11. Runners continue onto Bellflower toward East Blvd.
12. Runners will cross at Bellflower and Ford Dr and continue straight on Bellflower towards East Blvd.- [CWRU Officer at intersection](#)

13. Runners will cross at Bellflower and East Blvd. [CWRU Officer at intersection](#)
14. Runners will take a left to continue onto East Blvd.
15. Runners will take a right to head down to Wade Lagoon
16. Runners will take a left to begin a lap around Wade lagoon
17. Runners will curve right to continue the lap around Wade Lagoon
18. Runners will take a left to exit the Lagoon and run along Martin Luther King Dr heading towards Jephtha Dr
 - a. Picture of the route around the lagoon:



19. Runners will turn right on Jephtha Dr
20. Runners will turn right onto Wade Oval Dr and run towards East Blvd
21. Runners will turn left on East Blvd and run towards E. 108
22. Runners will turn right to cross at E. 108/East Blvd intersection and then continue straight on E. 108th- [CWRU Officer at intersection](#)

23. Runners will turn right on Magnolia Dr. and run towards Mistletoe Dr.
24. Runners will cross at Magnolia Dr. and Mistletoe Dr. - [Volunteers at intersection](#)
25. Runners turn left on Mistletoe and run towards Wade Park Avenue
26. Runners will turn right onto Wade Park Avenue and run towards E. 115th
27. Runners will cross at Wade Park and E. 115th- [CWRU Officer at intersection](#)
28. Runners will run straight towards E. 118th street
29. Runner will turn right onto E. 118th street
30. Runners will turn right onto Finnigan way
31. Runners will turn left onto Disanto Feld
32. Finish line will be the scoreboard at the entrance of Disanto Field