

## EMERGENCY EVACUATION MAP

2nd Floor

 IN CASE OF FIRE USE STAIRS  
DO NOT USE ELEVATOR

### Legend



ELEVATOR



FIRE EXTINGUISHER



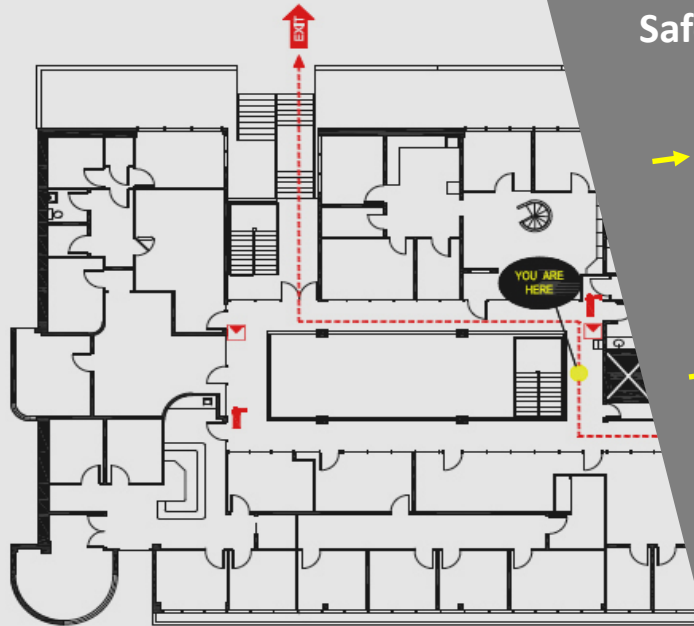
ACCESSIBLE



EXIT



FIRE ALARM PULL STATION



EMERGENCY PHONE # 911

## Safety & Response at University Special Events

- Learn how to prepare for and react to a potential safety threat at an event you or your team have coordinated.
- Hear about safe evacuation practices and emergency plans during indoor/outdoor events, including ballrooms on campus.
- Understand actions that an event coordinator can take during 'shelter in place' warning.

Friday, November 22, 1:00

Crawford Hall, Ground Floor Room A13

Refreshments will be served

*Inviting all individuals that coordinate events on campus*

# Event

# Coordinators

Sponsored by the Department of Public Safety &  
HR Professional Development Center